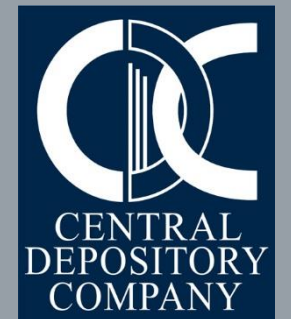


# CDS (RTA) REMOTE INSTALLATION GUIDE (AUTOMATED)

CENTRAL DEPOSITORY COMPANY

LAST UPDATED ON 17 MARCH 2020

**CDC CUSTOMER SUPPORT SERVICES: 0800-23275**



---

Prerequisites

---

Overview

---

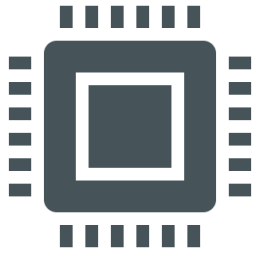
**Step A:** Automated Installation

---

**Step B:** Start using CDS

---

CONTENTS



The CDS terminal meets the hardware and software recommendations as advised by CDC in March 2020.



At least 2 Mbps dedicated Internet connection, should be available.



Latest version of Adobe Acrobat Reader is installed on the CDS terminal.

## PREREQUISITES



CDC always endeavors to provide maximum support to its valued clients. This Remote Installation Guide has been developed to achieve this goal. There are three steps to start using CDS from a new terminal.



**Step A:** Automated Installation



**Step B:** Start using CDS

OVERVIEW



Please click below Dropbox link to download CDS Application zip file containing automated installation setup along with other supporting files.



This will be downloaded as eCDS11g – RTA (Auto).zip (Approximate 177 MB)



<https://www.dropbox.com/sh/uycxe1f9ghslezd/AAQnuUDMrjuTjismWFBMn2YWa?dl=0>



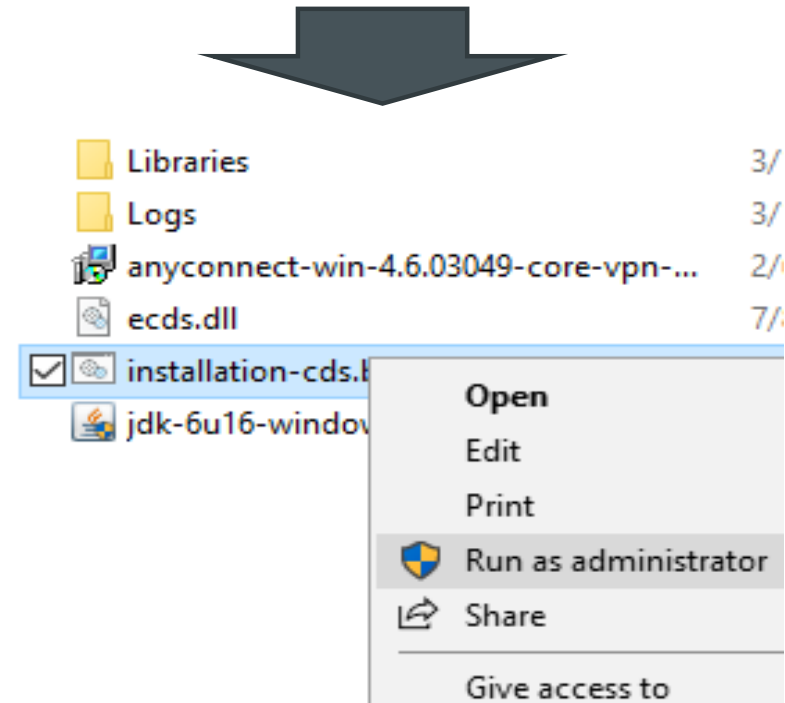
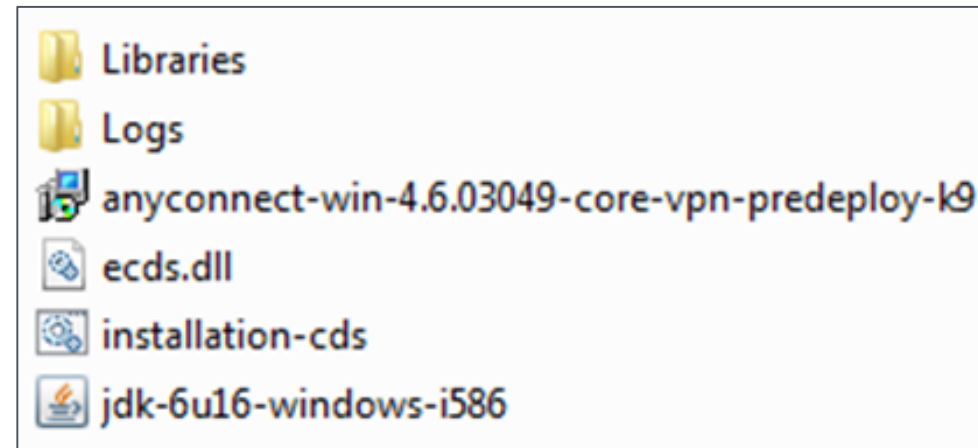
Unzip eCDS11g – RTA (Auto).zip file in any empty folder

## STEP A:

## AUTOMATED INSTALLATION

## STEP A: AUTOMATED INSTALLATION

- The contents after unzip are shown in image.
- User is only required to right click on file "installation-cds" and select Run As Administrator
- This will start silent installation of CDS



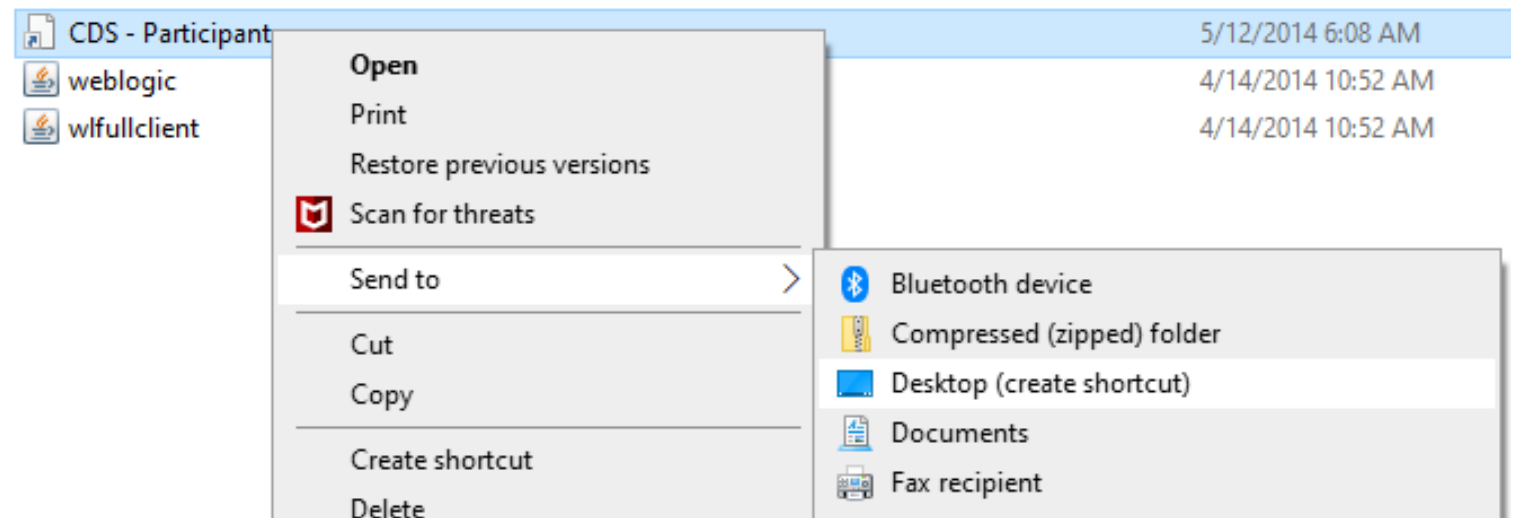
## STEP A: AUTOMATED INSTALLATION

- After completion of silent installation of CDS application, this screen will appear
- User may view status and also press any key to close this screen.

```
Libraries\CDS - RTA.url  
Libraries\weblogic.jar  
Libraries\wlfullclient.jar  
      3 file(s) copied.  
A subdirectory or file C:\eCDS already exists.  
      1 file(s) copied.  
"///// Installation Done /////"  
Press any key to continue . . . ■
```

## STEP A: AUTOMATED INSTALLATION

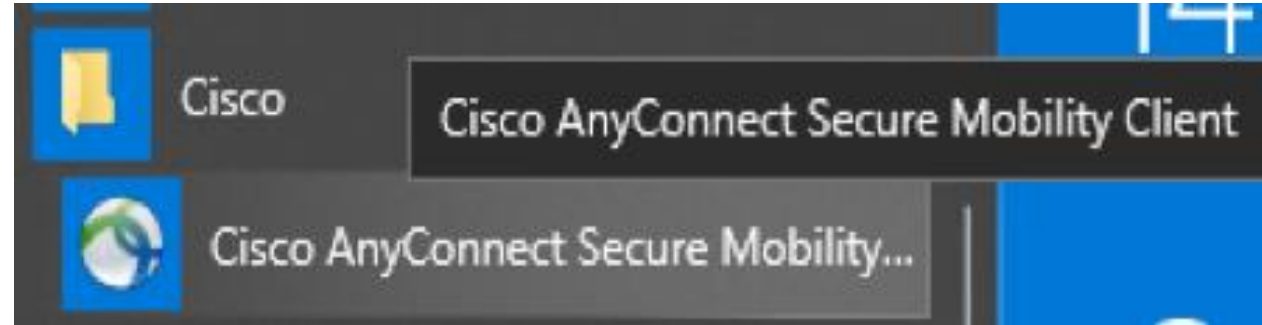
- As a result of Automated installation, two folders (eCDS & eCDS11g) will be created on root of C: drive
- Now open the folder eCDS 11g and copy CDS – RTA file on your desktop.





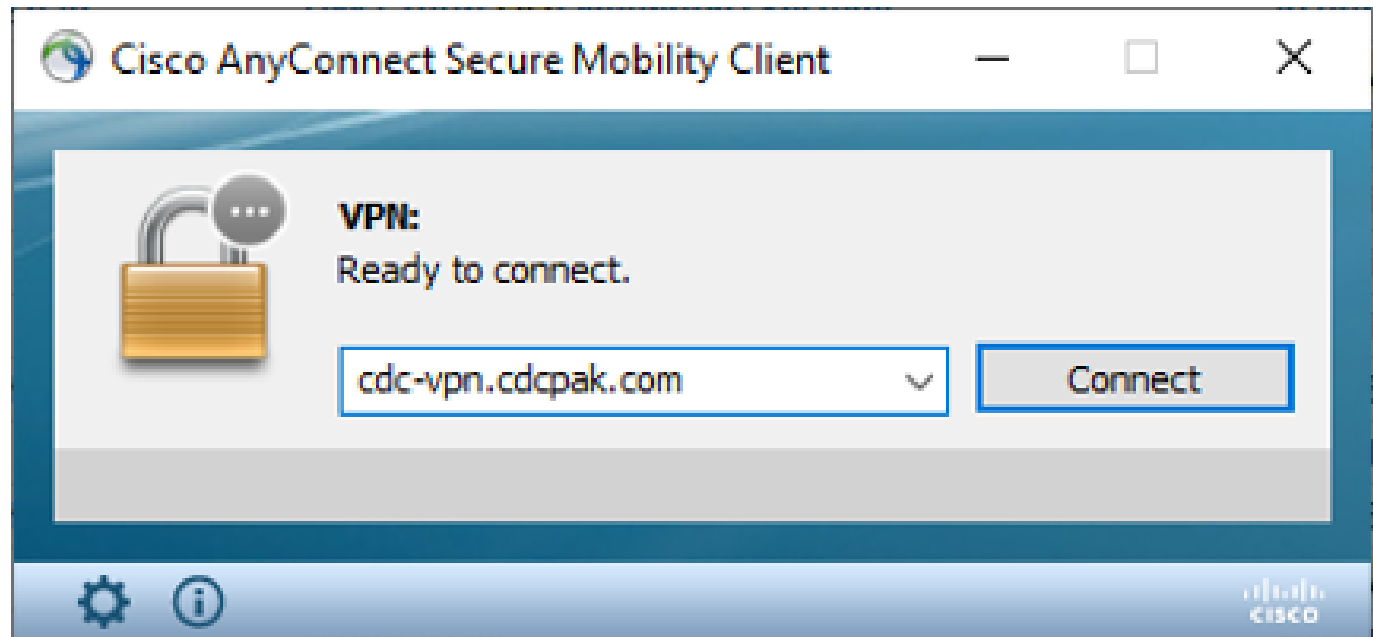
## STEP A: AUTOMATED INSTALLATION

- Now copy the shortcut of Cisco AnyConnect VPN client from Programs menu to your Desktop for more convenience.
- Now you have two shortcuts on your Desktop.



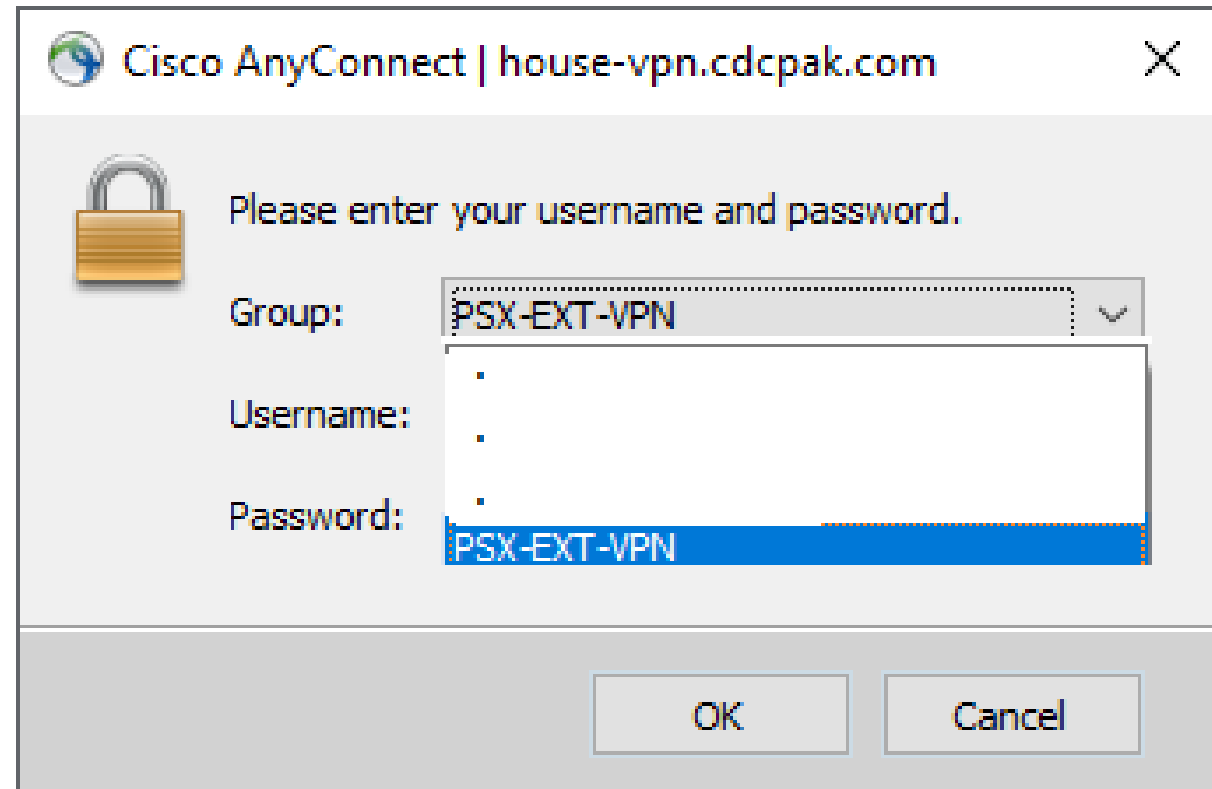
## STEP B: START USING CDS

- To login into CDS first launch Cisco AnyConnect client and enter the below address.
- [cdc-vpn.cdcpak.com](https://cdc-vpn.cdcpak.com)



## STEP B: START USING CDS

- Now select the following Group i.e. PSX-EXT-VPN from the drop-down list.



The screenshot shows a Cisco AnyConnect login window titled "Cisco AnyConnect | house-vpn.cdcpak.com". On the left, there is a padlock icon. The main text says "Please enter your username and password." Below this, there are three input fields: "Group:", "Username:", and "Password:". The "Group:" field is a drop-down menu with "PSX-EXT-VPN" selected. The "Username:" and "Password:" fields are empty. At the bottom, there are "OK" and "Cancel" buttons.

Cisco AnyConnect | house-vpn.cdcpak.com

Please enter your username and password.

Group: PSX-EXT-VPN

Username:

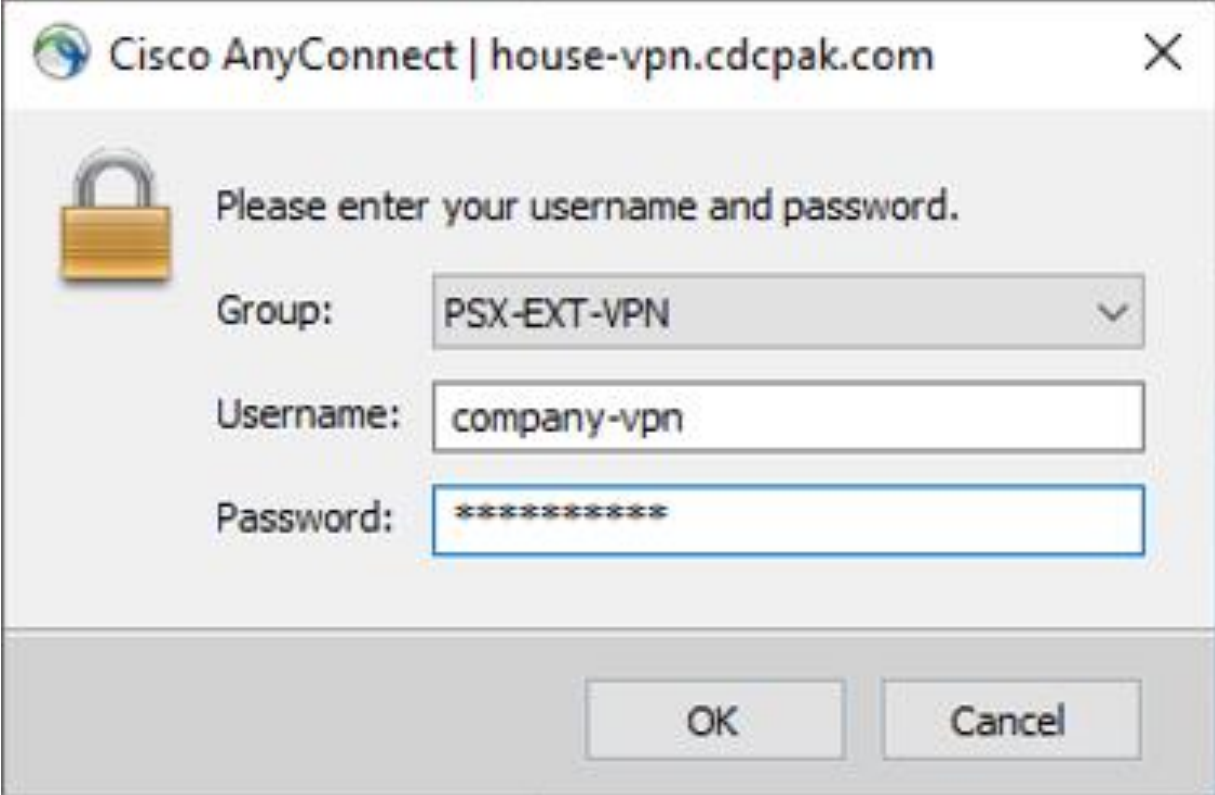
Password:

OK Cancel

## STEP B:

### START USING CDS

- Enter your existing VPN ID in Username field.
- Enter your existing password i.e. combination of 4-digit PIN + 6-digit number generated by the CDC provided 2FA token.
- And Click OK.
- If your provided credentials are valid then VPN will be established, and this pop-up window will be minimized automatically.



Cisco AnyConnect | house-vpn.cdcpak.com

Please enter your username and password.

Group: PSX-EXT-VPN

Username: company-vpn

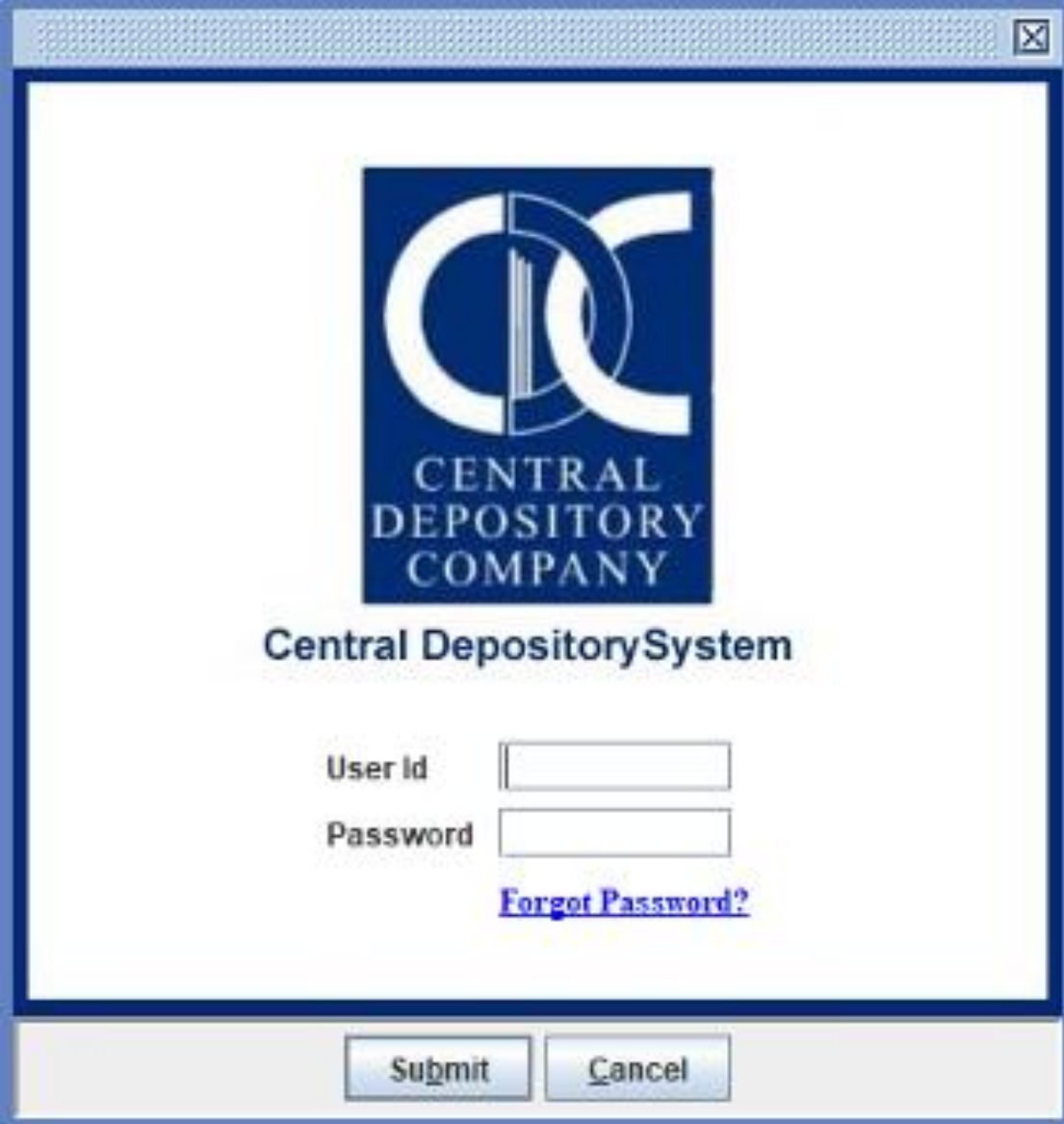
Password: \*\*\*\*\*

OK Cancel

The image shows a Cisco AnyConnect login dialog box. The title bar reads 'Cisco AnyConnect | house-vpn.cdcpak.com'. The main content area features a padlock icon and the instruction 'Please enter your username and password.'. Below this, there are three input fields: a dropdown menu for 'Group' with 'PSX-EXT-VPN' selected, a text box for 'Username' containing 'company-vpn', and a text box for 'Password' containing ten asterisks. At the bottom right, there are two buttons: 'OK' and 'Cancel'.

## STEP B: START USING CDS

- You may launch your CDS application by pressing on its shortcut.
- This will pop-up CDS Logon Screen where you shall be required to enter your CDS User ID and Password.



Central Depository  
COMPANY

Central DepositorySystem

User id

Password

[Forgot Password?](#)

Submit Cancel